



SystemSaver Pawn Edition User Guide
December 2015

Table of Contents

| | |
|---|----|
| IMPORTANT! PLEASE READ CAREFULLY: | 3 |
| General Information | 3 |
| SystemSaver Pawn Edition | 4 |
| Overview..... | 4 |
| System Requirements | 4 |
| SystemSaver Pawn Edition Walkthrough..... | 5 |
| Erase Personal Data..... | 5 |
| Step 1 | 5 |
| Step 2..... | 5 |
| Step 3..... | 6 |
| Step 4..... | 6 |
| Step 5..... | 7 |
| Step 6..... | 7 |
| Step 7..... | 7 |
| Step 8..... | 8 |
| Step 9..... | 8 |
| View System Specs..... | 9 |
| Step 1 | 9 |
| Step 2..... | 9 |
| Step 3..... | 9 |
| Step 4..... | 10 |
| Addendum 1 – Advanced Settings | 11 |
| Addendum 2 – Password Remover | 13 |
| Step 1 | 13 |
| Step 2..... | 13 |
| Step 3..... | 14 |
| Step 4..... | 14 |

IMPORTANT! PLEASE READ CAREFULLY:

Thank you for choosing SystemSaver Pawn Edition. Before running SystemSaver, please make sure that any files, folders, and any other information you wish to preserve is backed up on another media device (CD/DVD/EXT HD). SystemSaver Pawn Edition will securely delete all information on the hard drive leaving only the operating system intact; the information will NOT be recoverable by any means including forensic recovery tools.

General Information

- While wiping a hard drive on a laptop it is recommended that it remain plugged-in to a power source as the wiping process can take an extended amount of time. (Factors such as hard drive size and wiping methods determine this amount of time.)

SystemSaver Pawn Edition

Overview

When a Windows system saves a file, it does two things: it creates an entry for the file in the Master File Table, which functions as a sort of “table of contents” for the drive, and it saves the file data itself onto sectors of the hard drive. If a file is deleted using the Recycle Bin, the file is not actually deleted. The file’s entry in the Master File Table is deleted, but the data itself still remains intact on the hard drive, while the space that it occupies is marked for use, letting the system know that the space is available for new files to be written to. Unless new data is written to the space held by the deleted file, the original file still exists on the drive in its original state.

Any number of file recovery programs can easily look through the drive and find remnants of the file’s entry in the Master File Table and put the file back together, making it as if it was never deleted in the first place. The only way to truly delete a file is to overwrite it with other information.

The primary purpose of SystemSaver Pawn Edition is to securely overwrite data to make any type of data recovery impossible and document the process to comply with all applicable corporate and government regulations.

System Requirements

- Computer running Windows XP, Vista, 7, 8, or 10
- 512 MB Free Hard Drive Space
- 512 MB RAM

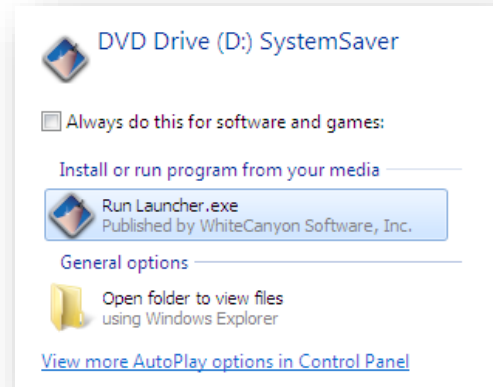
SystemSaver Pawn Edition Walkthrough

Erase Personal Data

Step 1

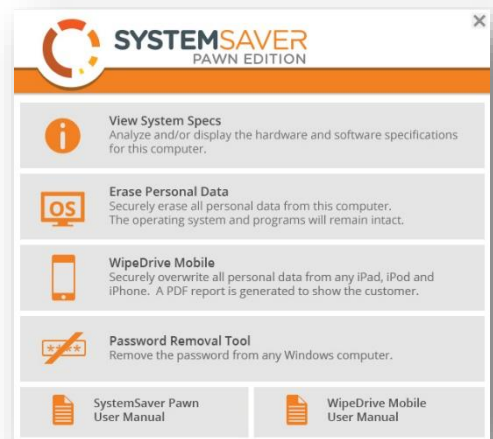
Insert the SystemSaver Pawn Edition CD in the target computer's CD drive and select **'Run Launcher.exe'** from the auto run prompt that appears.

If launching from a USB drive, insert the USB drive in an empty USB port in the target computer and double-click the **'Launcher'** file.



Step 2

Next click **'Erase Personal Data'** from the SystemSaver Pawn Edition screen.



During the installation, you will be prompted to install device software for Microcomputer Applications, Inc., click **'Install.'**



Step 3

Upon install, SystemSaver Pawn Edition will require activation. If you have an activation code enter that code here.

If you have an activation dongle, make sure it is plugged in to the computer then restart SystemSaver. The dongle will activate SystemSaver automatically.

If a cloud account was provided, enter your cloud account number. The computer must be connected to the internet in order to activate the software.

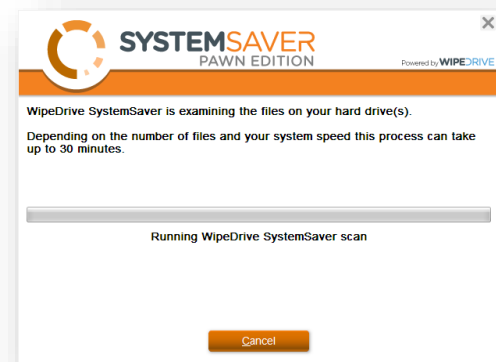
An activation code must be entered in order to continue.

For advanced options see [Addendum 1](#)

Step 4

Upon a successful activation, SystemSaver Pawn Edition screen will examine your computer for files.

Upon completion, your computer will automatically reboot.



Step 5

The software will now display how many licenses you have available.

Click '**Next**' to continue the cleaning process

Step 6

After rebooting, SystemSaver Pawn Edition will display all the detected programs install on the computer with the option to uninstall any of these programs before proceeding.

Unless uninstalled, these programs will be available and saved by SystemSaver.

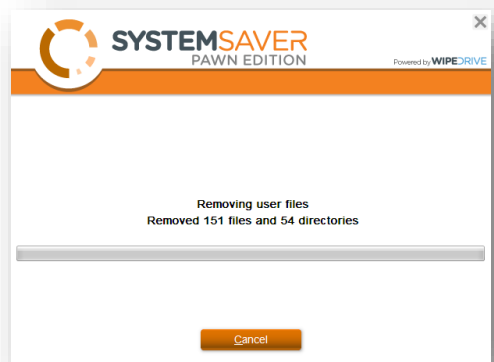
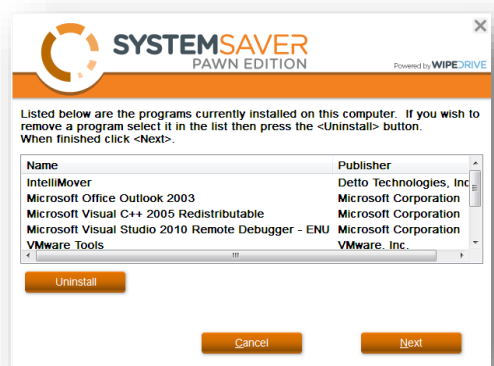
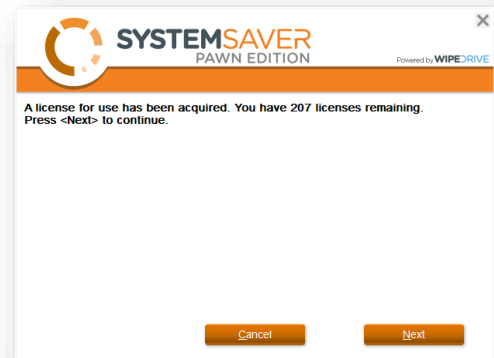
Please Note: You will not be asked this in the automated version and will need to manually uninstall programs prior to running SystemSaver

Click '**Next**' to continue the cleaning process.

Step 7

Now that SystemSaver Pawn Edition has determined what to remove it will begin the sanitization process.

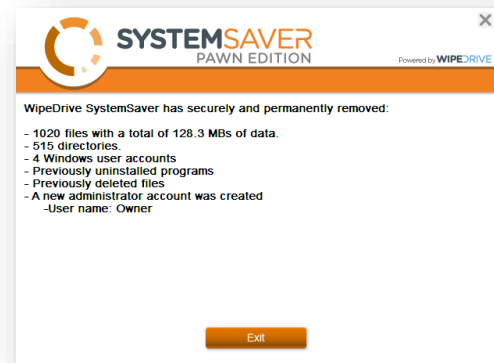
Depending on the size of the drive, the amount of data to be removed, and hard drive speed this process may take a significant amount of time.



Step 8

Upon completion, SystemSaver Pawn Edition will display what was removed as well as display the new user account name. Unless a password was created it will be blank with no password required.

Click '**Exit**' to close the program.



Step 9

Your computer should now revert back to the desktop. The desktop will display a new background and computer specifications. All programs, as well as the operating system will remain.

All documents, internet data, movies, music, etc have all been securely removed.

You are now ready to sell a freshly cleaned computer.

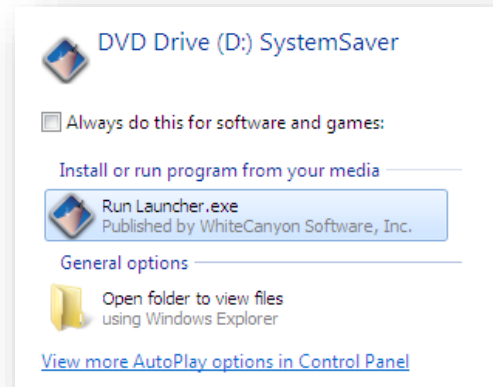


View System Specs

Step 1

Insert the SystemSaver Pawn Edition CD in the target's CD drive. Insert the SystemSaver Pawn Edition CD in the target computer's CD drive and select '**Run Launcher.exe**' from the auto run prompt that appears.

If launching from a USB drive, insert the USB drive in an empty USB port in the target computer and double-click the '**Launcher**' file.



Step 2

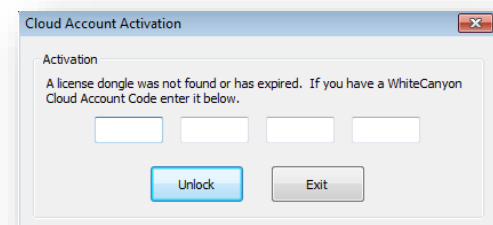
Next click '**View System Specs**' from the SystemSaver Pawn Edition screen.



Step 3

A Cloud Activation Screen will appear and ask you to enter your Cloud Activation Code. If you have a dongle attached, you may not see this message.

Type in your Cloud Account Code and press '**Unlock**'.

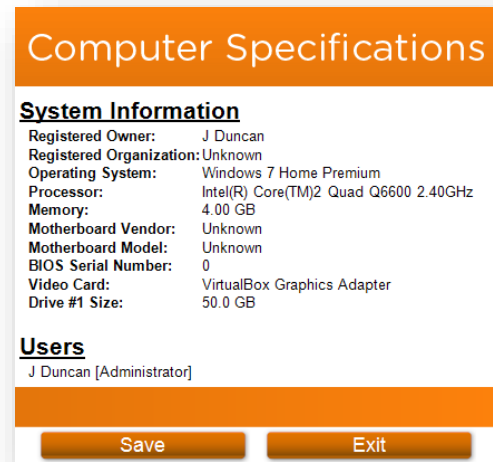


Step 4

A Computer Specifications screen will appear giving you a quick and easy way to determine the value of the computer making purchasing decisions easier.

Click '**Save**' to set the desktop wallpaper with a copy of the computer's specifications.

Click '**Exit**' to return to the desktop. A prompt will appear reminding you to remove the CD.



Addendum 1 – Advanced Settings

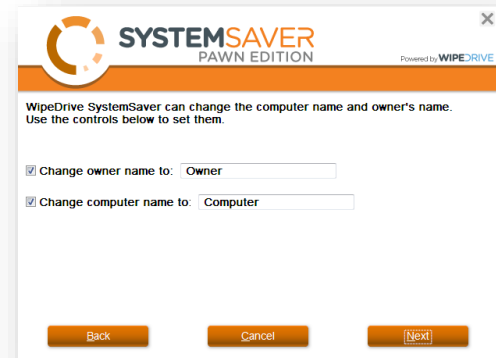
SystemSaver Pawn Edition allows the user to save current user accounts, setup a new user account and choose an overwrite pattern during the cleaning process.

Please Note: This only available in the advanced version.

The first options allows the user to keep user accounts from being removed. To keep the desired user account, place a check box next the account and select **'Next.'**



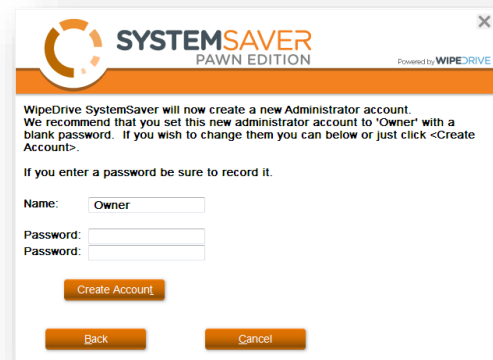
The next option allows the user to change the name of the owner and computer; otherwise they will be automatically named "Owner" and "Computer" respectively.



If you wish to change the name, make sure the checkbox is selected and type in the desired name for each.

Once finished, click **'Next.'**

You will also have the option to create a new user account and password. Simply type in the desired User name and new password in the provided text boxes. Once finished, click **'Create Account.'**

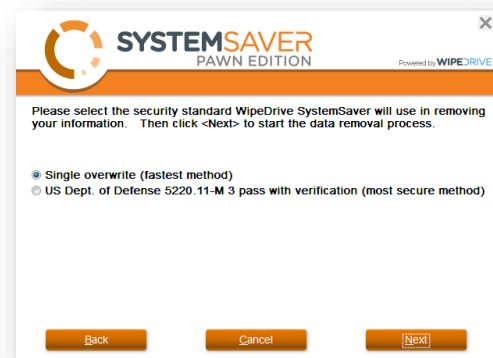


The screenshot shows a dialog box titled 'SYSTEMSAVER PAWN EDITION' with a 'Powered by WIPE DRIVE' logo. The text inside reads: 'WipeDrive SystemSaver will now create a new Administrator account. We recommend that you set this new administrator account to 'Owner' with a blank password. If you wish to change them you can below or just click <Create Account>'. Below this, it says 'If you enter a password be sure to record it.' There are two input fields: 'Name:' with 'Owner' pre-filled, and 'Password:' with two empty lines. At the bottom are three buttons: 'Create Account', 'Back', and 'Cancel'.

The final option allows the user to choose an overwrite option. SystemSaver Pawn Edition offers two overwrite options:

- Single overwrite
- US Department of Defense 3-Pass.

A single overwrite is all that is necessary to securely remove data and ideal if time is a factor. DOD 3-Pass is a standard 3 overwrite pattern followed by a verification pass. This method is ideal if you need to comply with security policies.



The screenshot shows a dialog box titled 'SYSTEMSAVER PAWN EDITION' with a 'Powered by WIPE DRIVE' logo. The text inside reads: 'Please select the security standard WipeDrive SystemSaver will use in removing your information. Then click <Next> to start the data removal process.' There are two radio button options: 'Single overwrite (fastest method)' which is selected, and 'US Dept. of Defense 5220.11-M 3 pass with verification (most secure method)'. At the bottom are three buttons: 'Back', 'Cancel', and 'Next'.

Addendum 2 – Password Remover

If computer is password protected, you will not be able to launch Windows to run SystemSaver Pawn Edition. We have included a password remover that will clear account passwords to allow you to log into Windows.

This tool works with Windows XP, Vista, 7, local Windows 8.x accounts, Windows 8.x online accounts, and 10.

This program requires launching from the boot menu. A SystemSaver Pawn Edition CD or bootable SystemSaver USB is required to run the Password Reset Tool.

Step 1

Insert the SystemSaver Pawn Edition CD into the system's CD tray or bootable SystemSaver USB into an available USB port.

Step 2

Restart the computer.

Note: On a Windows 8.x and 10 computer, you must enter the BIOS screen after reboot to disable UEFI and enable legacy mode. Check the computer manufacturer's documentation on this procedure. General instructions can be found on our support website: <http://support.whitecanyon.com/customer/portal/articles/1512099-boot-from-cd-on-windows-8-uefi->

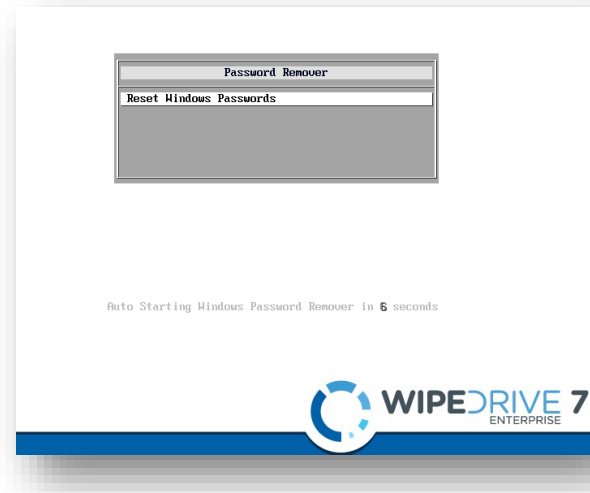
After restarting the computer, if it doesn't automatically boot into the desired device (CD or USB,) you may need to restart again to enter the boot menu to choose which device to boot into. (Check documentation to determine which key to press during startup to enter into the boot menu.)

Step 3

Once you have booted to the desired device, you will see this screen:

The password remover will automatically start after a few seconds.

The password remover requires no intervention by you. It will automatically discover all accounts and remove the associated passwords.



Step 4

Remove the CD or USB drive and press 'CTRL-ALT-DEL' to restart the computer.

Account passwords have been cleared allowing you to log into Windows.

