



WipeDrive for Windows™
User Guide

Table of Contents

General Information	3
Installation Guide	3
Running WipeDrive for Windows	5

General Information

WipeDrive for Windows was created in order to provide a simple and efficient way to erase storage devices. While keeping the main hard drive safe, WipeDrive for Windows targets all other media storage devices not containing a Windows operating system. This includes the following devices:

- External Hard Drives
- Internal Hard Drives
- USB Drives
- All other devices that show up on the computer as a “hard drive.”

Just to be sure any devices you **DO NOT** want to be wiped are safe; unplug them prior to running the WipeDrive for Windows program.

Hard drives containing operating systems other than Windows will be wiped by this software. This includes, but is not limited to, OS X and all Linux based operating systems (Ubuntu, Mint, Debian, etc.)

If in doubt, remove the device prior to executing the software and/or call our technical support line for any clarification.

Installation Guide

Begin the installation by double clicking the provided executable file.

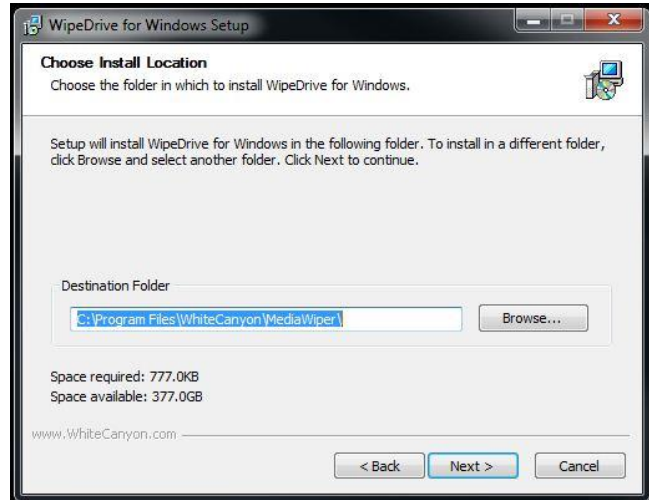
The following screen will appear making sure you intentionally want to install the software.

Click “**Next**” in order to continue.



The installation setup will then ask for an install destination for WipeDrive for Windows.

Choose your destination. It is recommended to use the default location, and then click the **“Next”** button.

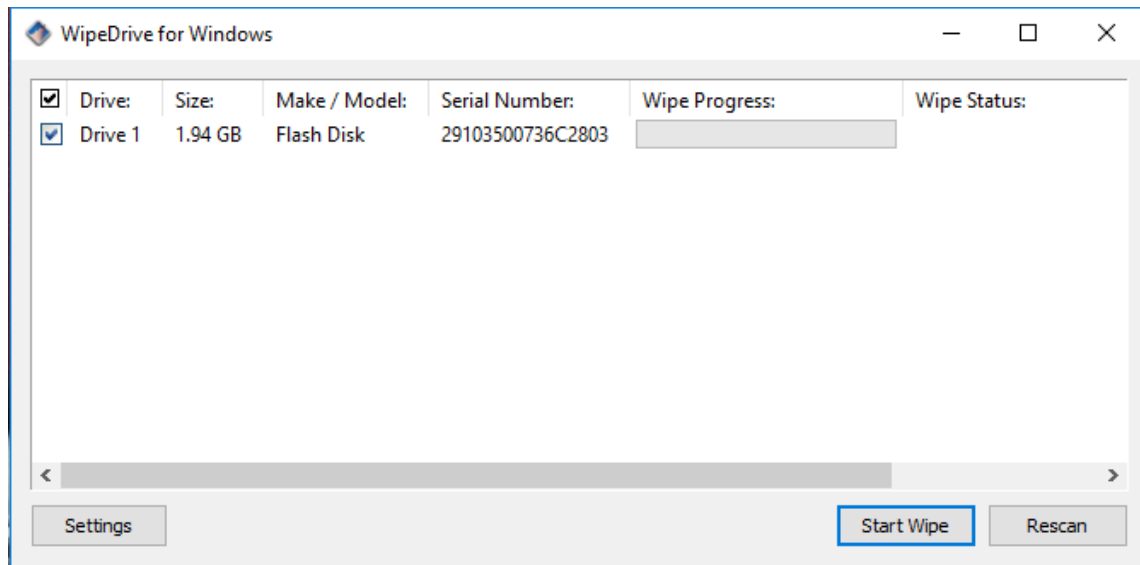


After the installation has completed a screen will appear with the option to run WipeDrive for Windows upon clicking the **“Finish”** button.

If not, be sure to uncheck the box next to **“Run WipeDrive for Windows.”**

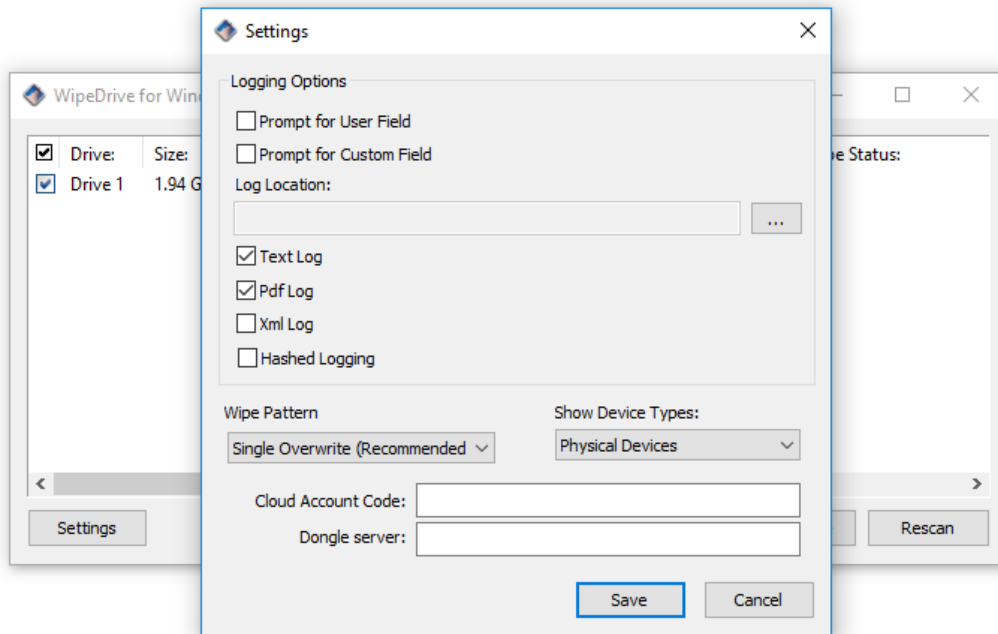


Running WipeDrive for Windows



This is the main interface when using WipeDrive for Windows. Connected hard drives not containing Windows operating systems are listed along with other available information such as Size, Make/Model, and Serial Number (if available). After starting the wiping process the Wipe Progress bar will progress as the hard drive is erased. To begin erasing the hard drive(s), be sure only the drives you want to erase are checked and click “**Start Wipe.**”

A few settings options are available by clicking the “**Settings**” button.



The settings available include log save location, wipe pattern, and activation options.

Once a wipe is complete it will create a results log to the location determined by the “Log Location.” Other settings include the option to add a User to the log file as well as create your own log field. To change the log file save destination click the button to the right of the ‘Log Location’ text box. Browse to find the desired save location and click ‘OK.’

Depending on your provided activation method either enter the provided cloud account code or connect your activation dongle. If the activation dongle is located on a different computer within the network enter the dongle server IP in the provided area labeled ‘Dongle server’.

Once finished configuring the settings, click “**Save**” to save the settings and to go back to the main interface.